

Technical Disclosure Commons

Defensive Publications Series

June 2023

PARTIALLY TRANSPARENT ARMREST OR CENTER CONSOLE WITH COUPLING BOX FOR A CELL PHONE

Axel Unger

Bertrandt Ingenieurbüro GmbH

Follow this and additional works at: https://www.tdcommons.org/dpubs_series

Recommended Citation

Unger, Axel, "PARTIALLY TRANSPARENT ARMREST OR CENTER CONSOLE WITH COUPLING BOX FOR A CELL PHONE", Technical Disclosure Commons, (June 30, 2023)

https://www.tdcommons.org/dpubs_series/6019



This work is licensed under a [Creative Commons Attribution 4.0 License](https://creativecommons.org/licenses/by/4.0/).

This Article is brought to you for free and open access by Technical Disclosure Commons. It has been accepted for inclusion in Defensive Publications Series by an authorized administrator of Technical Disclosure Commons.

PARTIALLY TRANSPARENT ARMREST OR CENTER CONSOLE WITH COUPLING BOX FOR A CELL PHONE

Vehicles often have a docking box to charge a cell phone. Here, the cell phone lies flat in a recess in the center console.



Example of a coupling box in a vehicle display



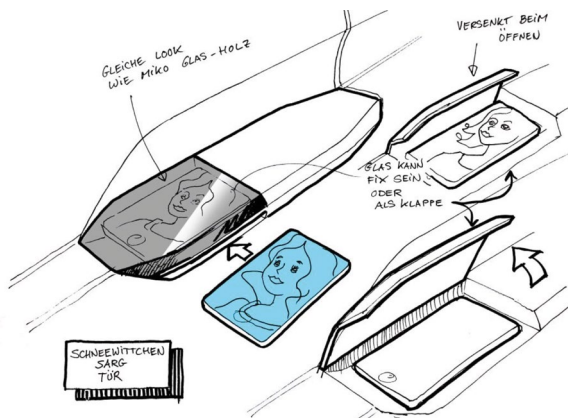
Example Coupling box under the armrest with rear comfort display

The problem is that the cell phone takes up a lot of space in the center console. Which means there is less room for controls or storage. An alternative is to place the coupling box under the armrest.

The disadvantage of this is that the cell phone is not visible, can be forgotten more easily and you do not see messages.

Solution:

The idea is to position the cell phone in the armrest, in the center console or in the door, with a part there transparent. This way you can see the cell phone and it can be charged at the same time. If the glass surface is not larger than the cell phone and is surrounded by padded material, the supporting function of the center console or armrest is maintained.



Sketch transparent coupling box

The cell phone can be slid into a slot under the glass and charged there. The cell phone is visible. Alternatively, the glass can be turned up or pushed away like a lid.

Advantages:

- Space is saved.
- The cell phone is visible and it is forgotten less quickly than with a tray that is not visible.