

Technical Disclosure Commons

Defensive Publications Series

January 2021

JOB RESERVE SUPPORT FUNCTION FOR REMOTE MACHINE

HP INC

Follow this and additional works at: https://www.tdcommons.org/dpubs_series

Recommended Citation

INC, HP, "JOB RESERVE SUPPORT FUNCTION FOR REMOTE MACHINE", Technical Disclosure Commons, (January 29, 2021)

https://www.tdcommons.org/dpubs_series/4024



This work is licensed under a [Creative Commons Attribution 4.0 License](https://creativecommons.org/licenses/by/4.0/).

This Article is brought to you for free and open access by Technical Disclosure Commons. It has been accepted for inclusion in Defensive Publications Series by an authorized administrator of Technical Disclosure Commons.

Title: Job Reserve Support Function for Remote Machine

Abstract: The invention relates to a function of Job Reserve Support for Remote Machine

When performing a job on a remote device, by setting the time desired by the user through Reserve before going to the set and preparing a separate option setting in advance, operations on the set are minimized, unnecessary operations, power save, or other it is an object of the present invention to minimize unpleasantness due to job.

Description:

Resolved Issues:

In order to do Copy/Scan/Fax Job in the machine used by many users, the users always had to go to the set and proceed with the job. And also, user have to load the document, so they have to go to the set. In this case, if the machine is being used or is in a power save state, the users must wake up and wait the machine idle and have to type each option. After then that user could start the job.

This delay will occur more often, and it will be causing inconvenience.

Configuration:

The present invention begins with

- checking the status of the set to be used with a PC and scheduling Copy/Scan/Send Job on the PC.

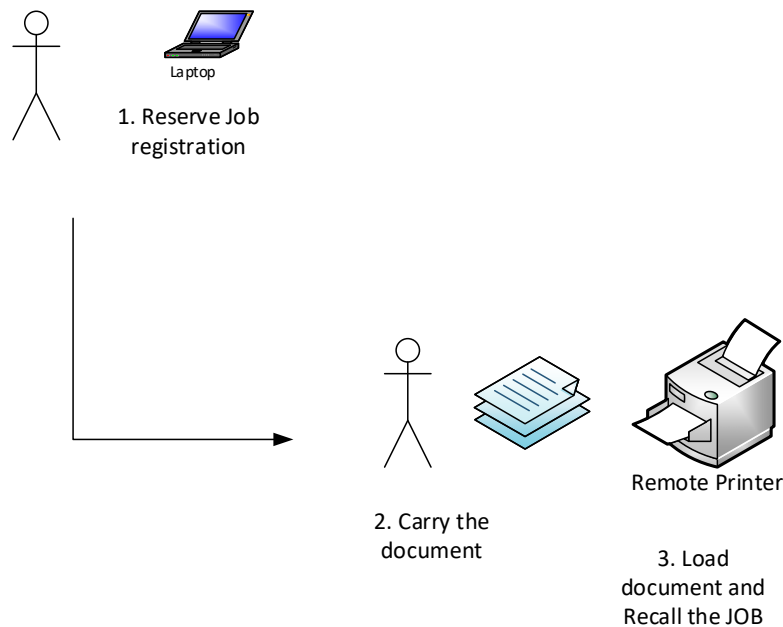
1. The user checks whether the remote machine is in use through PC Application.
2. If it is in use, **click Reserve Job** to show the jobs available immediately and those available through reservation separately.
- 3-a. In the case of a job that can be used immediately, it asks whether to operate Option reserve. Option reserve column, manuscript to be used (ADF/Platen), Job type, color, etc..
Provides interactive or virtual UI format to set all options in advance.
- 3-b. When a reservation job is required, the available time is provided through the list statistics of the current job and the reserved job, and if the reservation is made at that time, Option Reserve is performed in the same manner.
4. The user takes the manuscript to the set and logs in.

Recall the reserved job by step 3 above and place the manuscript in the ADF or the manuscript in the Platen. The reservation job is recalled and executed. Therefore, the user does not need to set the Option in the set.

5. In the case of a job that can be used immediately in 3-a, it also provides a function to block other reserved jobs from entering through time until I reach the set.

In addition, wake up is done in advance from the remote so that it is ready to use when it arrives.

6. In the case of 3-b, operate 5 above according to the reservation time.



Disclosed by Kihun KIM, and Joochul LEE, HP Inc.