

Technical Disclosure Commons

Defensive Publications Series

January 2020

SENDING INFORMATION DISPLAYED ON A SCREEN SAVER ACCORDING TO USER INPUT FOR GETTING OUT OF THE SCREEN SAVER MODE

HP INC

Follow this and additional works at: https://www.tdcommons.org/dpubs_series

Recommended Citation

INC, HP, "SENDING INFORMATION DISPLAYED ON A SCREEN SAVER ACCORDING TO USER INPUT FOR GETTING OUT OF THE SCREEN SAVER MODE", Technical Disclosure Commons, (January 30, 2020)
https://www.tdcommons.org/dpubs_series/2921



This work is licensed under a [Creative Commons Attribution 4.0 License](https://creativecommons.org/licenses/by/4.0/).

This Article is brought to you for free and open access by Technical Disclosure Commons. It has been accepted for inclusion in Defensive Publications Series by an authorized administrator of Technical Disclosure Commons.

Sending information displayed on a screen saver according to user input for getting out of the screen saver mode

Invention Background

Product supports to play movie clip on control panel. This is very useful functionality and it gives many solutions as well. We can give more information to user when we play movie clip during sleep time. For example, we can guide how to use printer for students and how to solve problem such as jam and toner empty in library and administrator can share notice to employees on control panel in company.

This Screen Saver Handler can play not only movie but also image and external streaming service. Below is list.

- **Movie clip(s) which is(are) stored in printer**
- **Image(s) which is(are) stored in printer**
- **Movie clip(s) which is(are) stored outside printer, such as SMB.**
- **Image(s) which is(are) stored outside printer, such as SMB.**
- **Streaming network service**

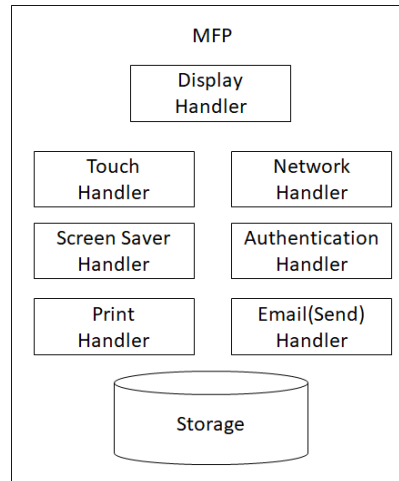
Surely administrator can change contents through remote control in terms of management.

Invention Description

Screen Saver Handler will share additional information to user who wants to get the movie's details. There are several scenarios as below.

- 1. When user wakes-up printer which plays movie during sleep with Multiple touches (Not single touch) and logs-in, movie's details will be sent to login user via email or printer prints-out the details immediately.**
- 2. Prompt windows opens when user touches control panel. User can do next action on this prompt. Next action is same as #1.**
- 3. When playing movie, there will be additional button to print out details. (or send email)**

Invention Detail



This is Screen Saver Structure.

Screen Saver Handler gets how to be waked-up from Touch Handler. It will be single touch, multiple touches (or pattern). When waking-up from sleep, Screen Saver Handler will stop playing movie and check double touch or single touch. In case of double touch, user will get additional information of movie.

Network Handler oversees getting movie, image and streaming service when Screen Saver Handler requests them.

Authentication Handler sends login user's information to Screen Saver Handler.

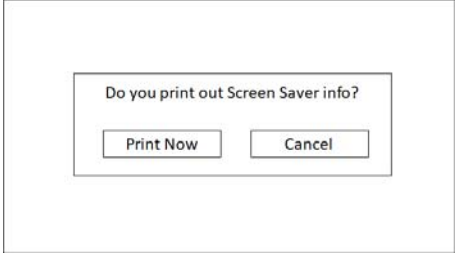
Storage has movie clip, image and details mapping table.

Display Handler plays movie and image on control panel.

Printer handler prints-out when Screen Saver Handler requests printing.

Email (Send) Handler sends email to user.

Also, according to administrator's setting, printer opens prompt window and let user select next action.



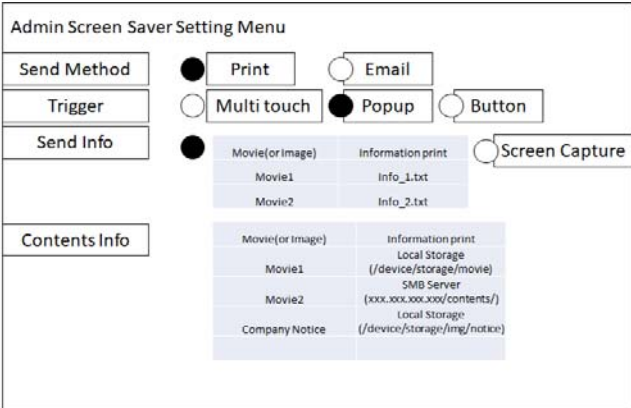
Also, there is additional button to print details.



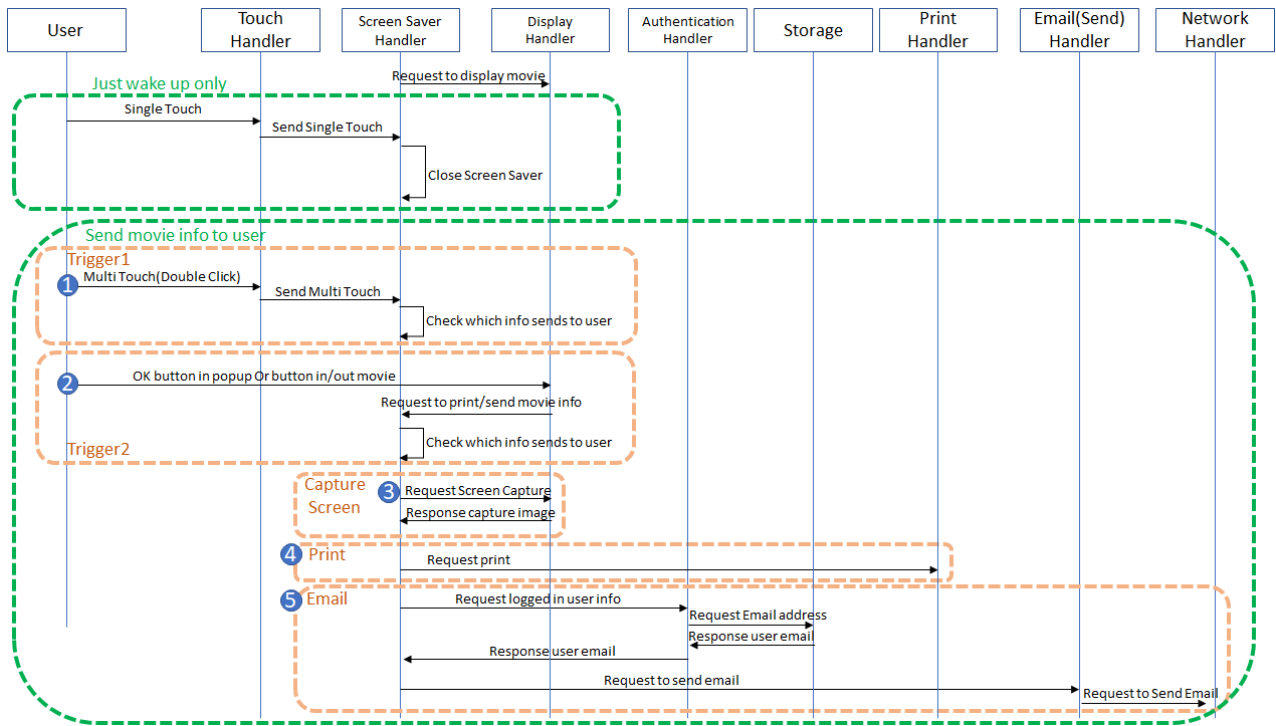
There is mapping table in between movie and details. For example, in below mapping table, Movie2 plays and user wakes-up printer at that time, Info_2.txt will be sent to user.

Movie (or Image)	Information print
Movie1	Info_1.txt
Movie2	Info_2.txt
Movie3	Info_3.txt
ImageA	Info_4.txt
ImageB	Info_5.txt

Administrator can set several options in Setting menu.



Below is overall flows.



Disclosed by Soo-Young Kang, HP Inc.