

# Technical Disclosure Commons

---

Defensive Publications Series

---

December 2019

## KEYBOARD BACKLIGHT TURN-OFF WHILE ENTERING USERNAME/PASSWORD

HP INC

Follow this and additional works at: [https://www.tdcommons.org/dpubs\\_series](https://www.tdcommons.org/dpubs_series)

---

### Recommended Citation

INC, HP, "KEYBOARD BACKLIGHT TURN-OFF WHILE ENTERING USERNAME/PASSWORD", Technical Disclosure Commons, (December 19, 2019)  
[https://www.tdcommons.org/dpubs\\_series/2787](https://www.tdcommons.org/dpubs_series/2787)



This work is licensed under a [Creative Commons Attribution 4.0 License](https://creativecommons.org/licenses/by/4.0/).

This Article is brought to you for free and open access by Technical Disclosure Commons. It has been accepted for inclusion in Defensive Publications Series by an authorized administrator of Technical Disclosure Commons.

# **Keyboard Backlight Turn-off While Entering Username/Password**

## **Problem:**

- In industrial PC (both notebook and desktop), there are product models providing backlight keyboard. It's convenient for a user's typing in dark environment.
- However, user in bright environment will be easy to notice people around, but not in dark environment.
- Thus, there is security risk while user typing the username/password in dark environment, and other people may have chance to peek easier with the user's fingers typing on the keyboard with backlight, and without noticing people around his/her
- While user typing passwords, the computer shows "\*" or "●" on the display, but backlight keyboard doesn't have any design to protect from the risk.

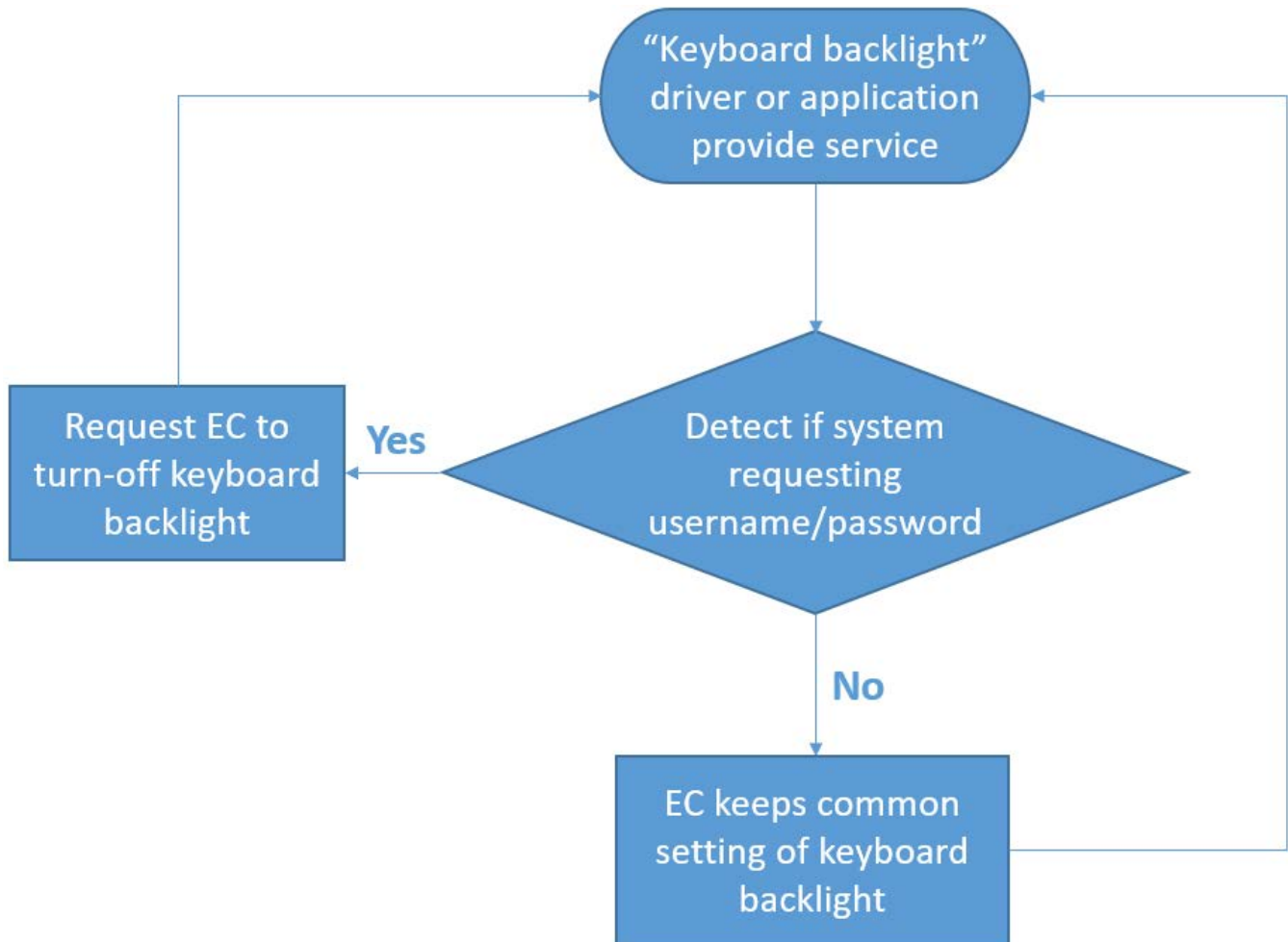
## **Objectives:**

1. Design a method that PC can detect user is typing username/password, and PC can temporarily turn-off the keyboard backlight until user completing to access security pages.

## **Solution:**

- Currently have known that keyboard backlight on/off status is controlled with EC (Embed Controller) code in BIOS.
- To can develop a "keyboard backlight on/off " driver or application to detect the browsers/ OS login page that PC system is requesting user to type username/password. Then, the driver or application can send request to EC to turn-off keyboard backlight.
- Once user completing to access the security check conditions, the driver or application can send notice EC to resume common setting of keyboard backlight.

## Flow Chart – Algorithm



*Disclosed by Ming-Tso Yao and Harry Chang, HP Inc.*