

Technical Disclosure Commons

Defensive Publications Series

June 07, 2018

ATTACHMENT OF A FLAG POLE TO THE VEHICLE

Daniel Hoppe

Bertrandt Ingenieurbüro GmbH

Follow this and additional works at: https://www.tdcommons.org/dpubs_series

Recommended Citation

Hoppe, Daniel, "ATTACHMENT OF A FLAG POLE TO THE VEHICLE", Technical Disclosure Commons, (June 07, 2018)
https://www.tdcommons.org/dpubs_series/1227



This work is licensed under a [Creative Commons Attribution 4.0 License](https://creativecommons.org/licenses/by/4.0/).

This Article is brought to you for free and open access by Technical Disclosure Commons. It has been accepted for inclusion in Defensive Publications Series by an authorized administrator of Technical Disclosure Commons.

ATTACHMENT OF A FLAG POLE TO THE VEHICLE WITH A CONNECTION TO THE FENDER BENCH INSTEAD OF THE FENDER PANEL (OUTSIDE)

Technical task:

The task of the technical innovation is to provide a base of flag holder fasteners through a common-part concept, which fundamentally need not be changed for different models.

Initial situation:

So far, the flag holder, also called standard holder, was specifically developed and manufactured for individual vehicles, with a high variance and several new parts per project arise. The attachment was previously directly on the fender panel. This type of connection to the vehicle, an adaptation of at least three components per vehicle side was necessary for each vehicle model (see pictorial representation). So far, a specific reinforcement plate was required for each new project, which was adapted via an embossing tool to the stroke of the fender, also an EPDM injection mold for the molded seal was made and a new Absteckteil developed, which has included the appropriate angle adjustment.

Solution:

The technical innovation provides for attachment of the flag holder on the fender bench in conjunction with another attachment method.

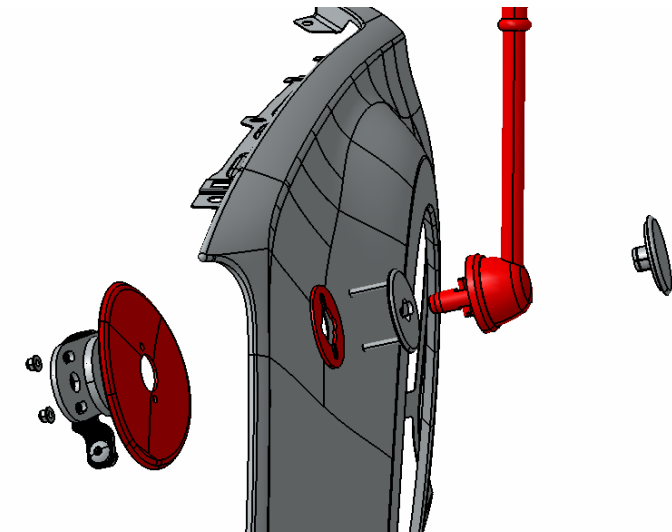
In the two pictures shown below, the before-and-after status is shown in an exploded view. The red colored components have to be adapted to the specific vehicle depending on the design of the outer skin and body shape.

Selecting the attachment of the flag holder regardless of the mudguard sheet, allows a much larger common parts concept. This leads to lower production costs, storage costs and the spare parts supply benefits from such a concept. These 3 components to be adapted each have been replaced by a new component in the new concept. See pictorial representation.

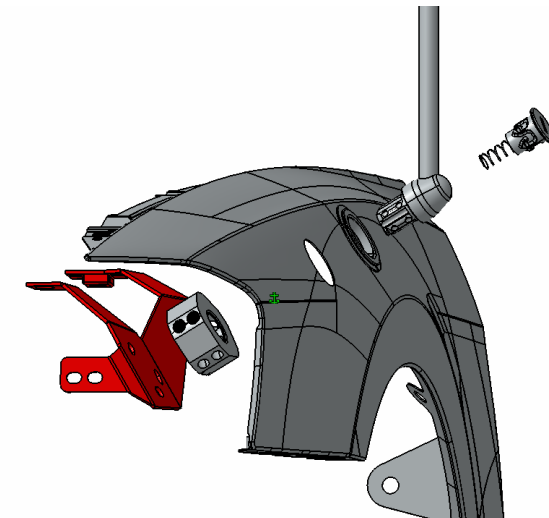
Possible application:

- For all vehicles equipped with flagpoles.

Stand der Technik & technische Neuerung



Heutiger Stand – Neuteile je Fahrzeugprojekt sind rot markiert: Verstärkungsblech, Formdichtung, Absteckteil



technische Neuerung – Neuteile je Fahrzeugprojekt sind rot markiert: Halteblech